



RECOMMENDED USE:

Recommended use: For low-rise curtain wall applications requiring extraordinary thermal performance, particularly owner-occupied buildings.

PRODUCT DESCRIPTION:

Fibreglass-framed curtain wall framing system certified as having the world's best thermally performing by Germany's Passive House Institute (PHI) with a phA+ "Cold Climate" rating. 63.5mm width (2.5") and 152mm (6") depth profile. Available exclusively for triple-glazed stick-built applications.

COMPOSITION & MATERIALS:

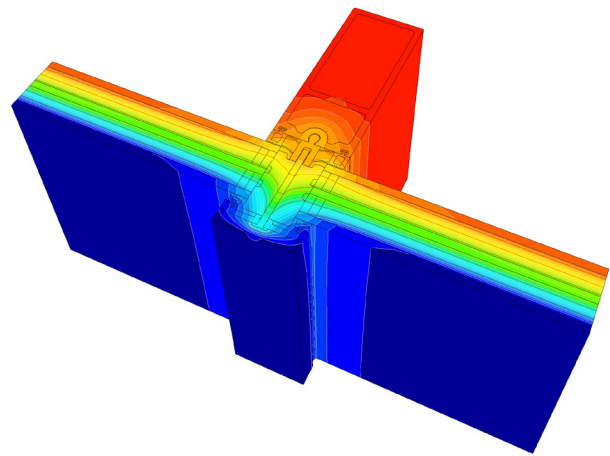
- Fibreglass-reinforced plastic (FRP) back body
- Fibreglass-reinforced plastic (FRP) pressure plate
- Aluminum anodized snap cap (vanity cap)
- Extruded silicone or EPDM gaskets
- Extruded Polystyrene (EPS) insulation
- EPDM corner blocks
- PVC anti-rotation (spacer) channels
- Aluminum spigots (T-connectors)
- Steel reinforcing members as required

FINISHES :

FRP back body available in standard colours: black, white, and dark gray. Other colours: paint-to-sample (paint-to-match).

LIMITATIONS:

- Designed for IGU with 56mm (2.2") overall thickness
- Curtain wall must be installed perpendicular (90 degrees) to the floor
- Curtain walls must be reviewed for structural and load requirements
- Contact GlasCurtain for further technical support



FEATURES & BENEFITS:

- Suitable for low-rise buildings requiring extraordinary thermal envelope performance
- R9.5 Overall, frame and glass (0.60 W/m²K)
- 60% smaller carbon footprint than aluminum-framed competitors
- Exclusively triple-glazed
- Improved thermal comfort for occupants and tenants
- Fully-captured (pressure plates on all four sides of glass) for optimal wind load resistance, dead load capacity, and air/water penetration resistance
- Compatible with operable vents
- Certified to [Passive House Institute](#) Cold Climate requirements, ASTM, CSA, and AAMA standards
- Manufactured, fabricated, and designed in Canada