



## RECOMMENDED USE:

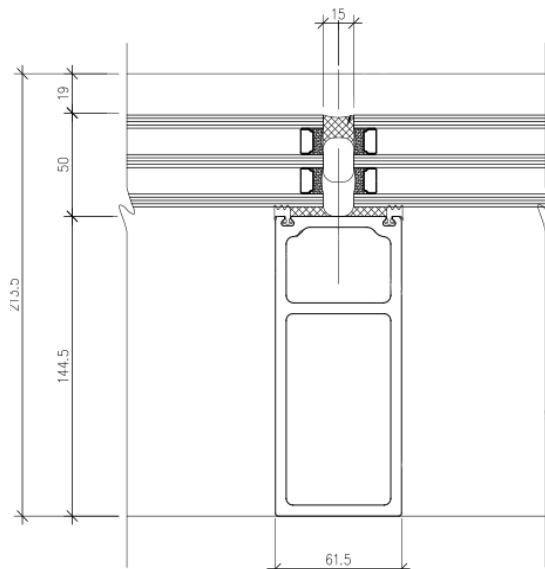
For low-rise curtain wall applications requiring the highest thermal performance, particularly owner-occupied buildings.

## PRODUCT DESCRIPTION:

Structural silicone glazed (SSG) thermally-broken curtain wall system with 62mm (2.4") width profile and 145mm (5.7") mullion depth. Available exclusively for triple-glazed stick-built applications.

## COMPOSITION & MATERIALS:

- Fibreglass-reinforced plastic (FRP) back body
- Fibreglass-reinforced plastic (FRP) pressure plate on two sides of glass
- Aluminum anodized snap cap (vanity cap) on two sides of glass
- Structural silicone joint on two sides of glass
- Extruded silicone or EPDM gaskets
- EPDM corner blocks
- PVC anti-rotation (spacer) channels
- Aluminum spigots (T-connectors)
- Steel reinforcing members as required



## FINISHES :

FRP back body available in standard colours: black, white, and dark gray. Other colours paint-to-sample (paint-to-match).

## LIMITATIONS:

- Only suitable for buildings permitting combustible envelope construction. For building with envelopes requiring non-combustible construction (or CAN/ULC-S134 certified components), see GlasCurtain Therm134 system ([link](#))
- Only two-sided structural silicone joints, either vertical or horizontal
- Designed for IGU with 44mm (1.75") overall thickness
- Curtain wall must be installed perpendicular (90 degrees) to the floor
- Curtain walls must be reviewed for structural and load requirements
- Contact GlasCurtain for further technical support

## FEATURES & BENEFITS:

- Ultra-high thermal performance
- R7 Overall, frame and glass (0.85 W/m<sup>2</sup>·K/0.15 Btu/ft<sup>2</sup>·F)
- Exclusively triple-glazed
- Vertically- or horizontally-aligned structural silicone joints
- Improved thermal comfort for occupants and tenants
- Compatible with operable vents
- Tested to ASTM, CSA, and AAMA requirements
- Manufactured, fabricated, and designed in Canada