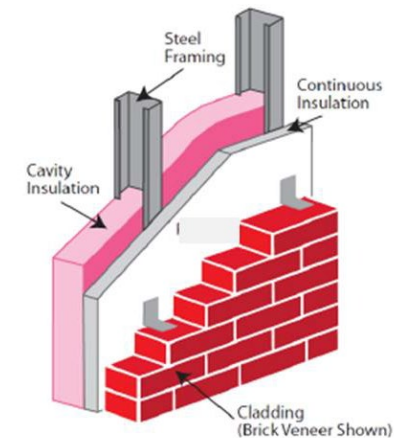
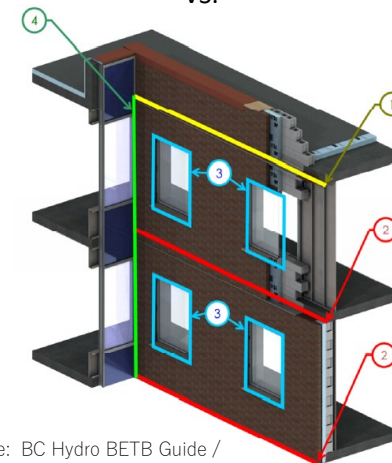


What do codes require?

- Framing thermal bridges (studs, tracks, headers, etc.) are accounted for in the prescriptive R-values and U-factor calculations for individual assemblies (walls, roofs, floors, etc.)
- Thermal bridges that occur at intersection of assemblies and components have not commonly been accounted for.
 - ASHRAE 90.1 Performance path has required them to be considered as “uninsulated assemblies”, but this is inaccurate and often not enforced.
 - Prescriptive R-value path (and baseline for the performance path) was built on the assumption of no unaccounted thermal bridges.



VS.



Source: BC Hydro BETB Guide / Morrison Hershfield LTD